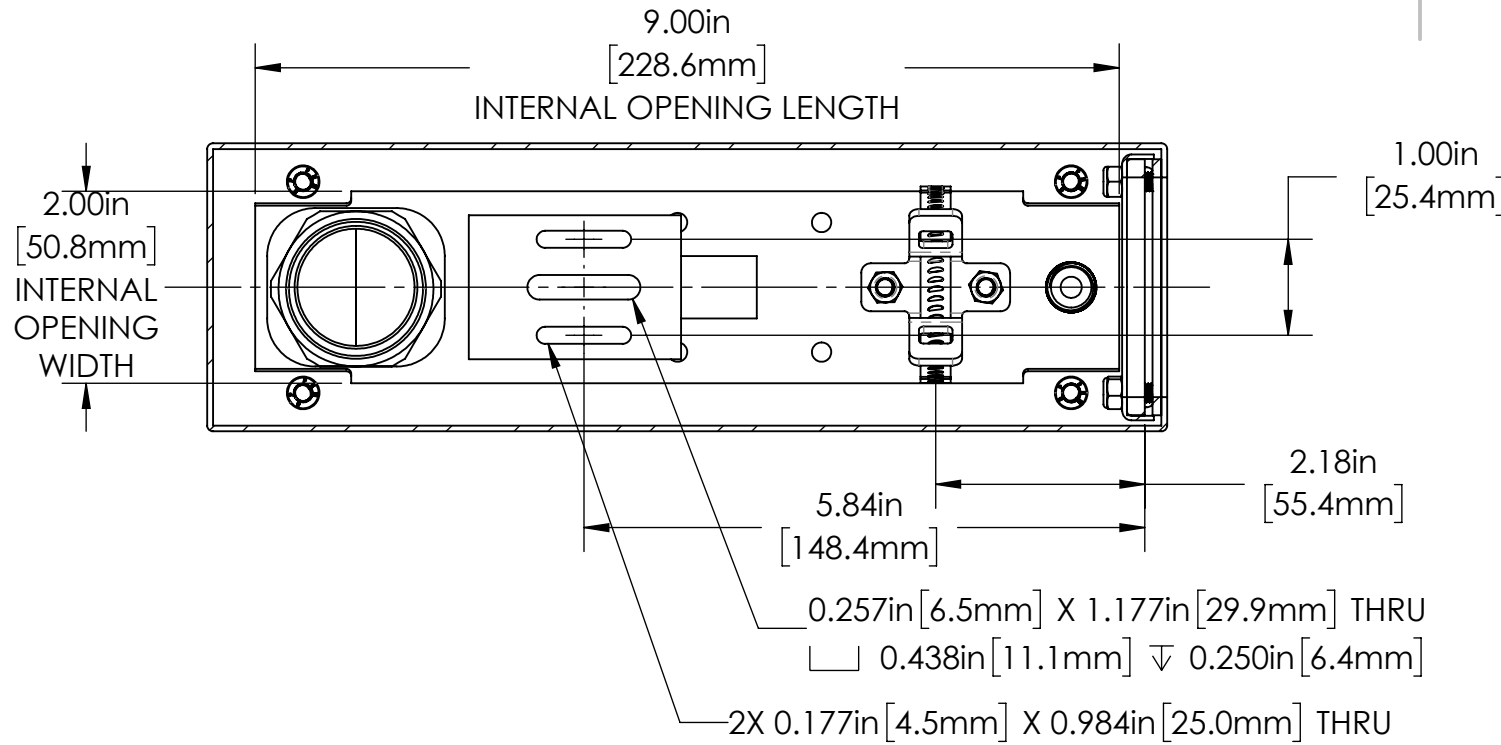


1 2 3 4 5 6

A

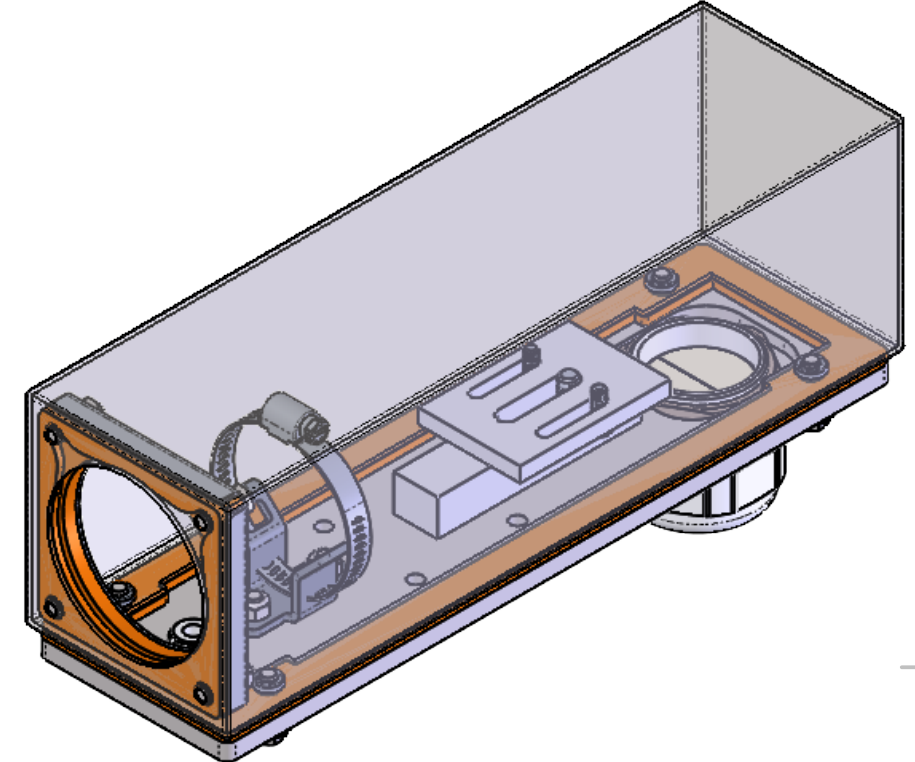


SECTION A-A

REVISIONS				
ZONE	REV.	DESCRIPTION	DATE	APPROVED
	A	RELEASED FOR PRODUCTION	9/9/2021	DMM

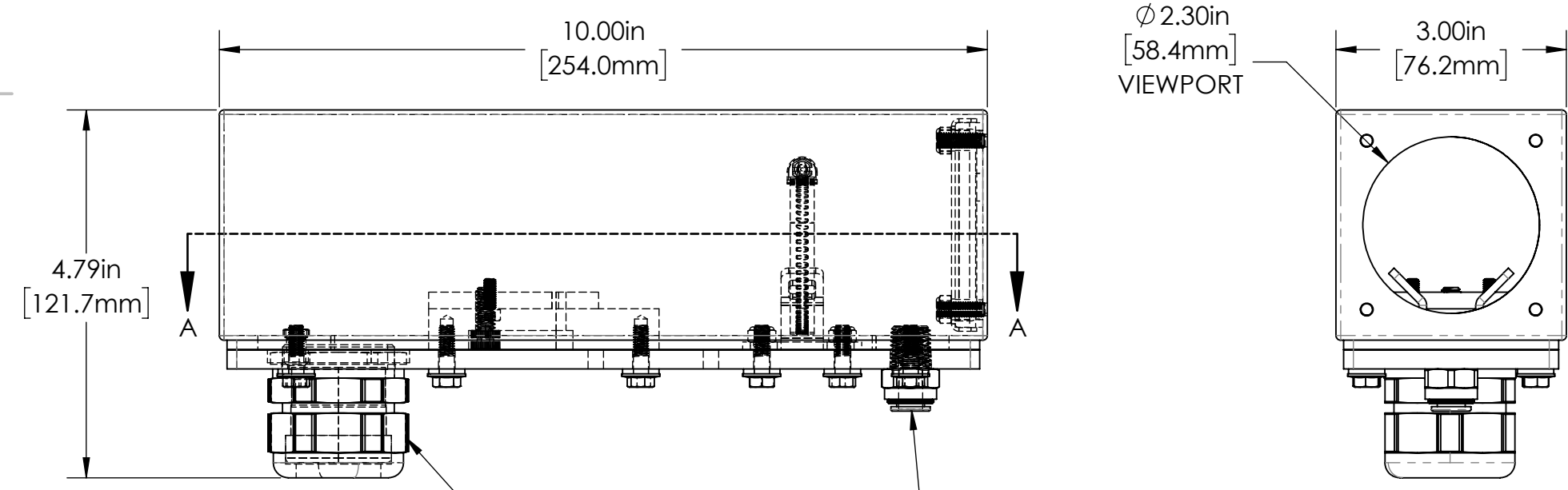
A

B



B

C



Ø 2.30in [58.4mm] VIEWPORT

C

PG29 CORD GRIP

PUSH-TO-CONNECT AIR FITTING FOR 5/16" OD TUBING

30S SERIES PROPERTIES TABLE		
ENVIRONMENT RATING	IP52*	
	(*RATING MAY CHANGE IF INSTALLER MILLS CABLE GLAND OUTSIDE OF TOLERANCE)	
COMPONENT	MATERIAL	FINISH
BODY/BASE	316 SS	BURNISHED
GASKET	40D SILICONE	NONE
ARM/ADAPTOR	5052 ALUM	NONE
HARDWARE	316 SS - EXTERNAL, 18-8 SS - INTERNAL	NONE

MACHINING		SHEET METAL	
X.X	0.0250"	HOLE TO HOLE (SAME SURFACE)	X.X
X.XX	0.0100"	X.X	0.030"
X.XXX	0.0050"	X.XX	0.010"
X.XXXX	0.0005"	X.XXX	0.005"
ANGULAR	0.5°	HOLE TO FOLDED EDGE	X.X
DEBURR ALL		X.XX	0.035"
		X.XXX	0.015"
		FOLD TO FOLD	X.X
		X.X	0.045"
		X.XX	0.035"
		X.XXX	0.020"
		ANGULAR	1.0°

APG Vision LLC
4055 Alpha Drive
Allison Park, PA 15101 USA
Phone +1 (412) 487-8211
apgvision.com

apgvision

DESCRIPTION:
30S 10IN ENCLOSURE FOR CISAF2000 WITH AIR CURTAIN GASKET & PG29 CORD GRIP

MATERIAL: SEE PROPERTIES TABLE

FINISH: SEE PROPERTIES TABLE

DRAWN BY:	DATE:	SCALE:	SHT-SIZE:	APPROX. WEIGHT (LBS)
TWD	9/9/2021	1:2	B	4.4157
CHECKED BY:	DATE:	PART NUMBER:	REVISION	
DMM	9/9/2021	30S-HS	A	

Sheet 1 of 1

D

1 2 3 4 5 6