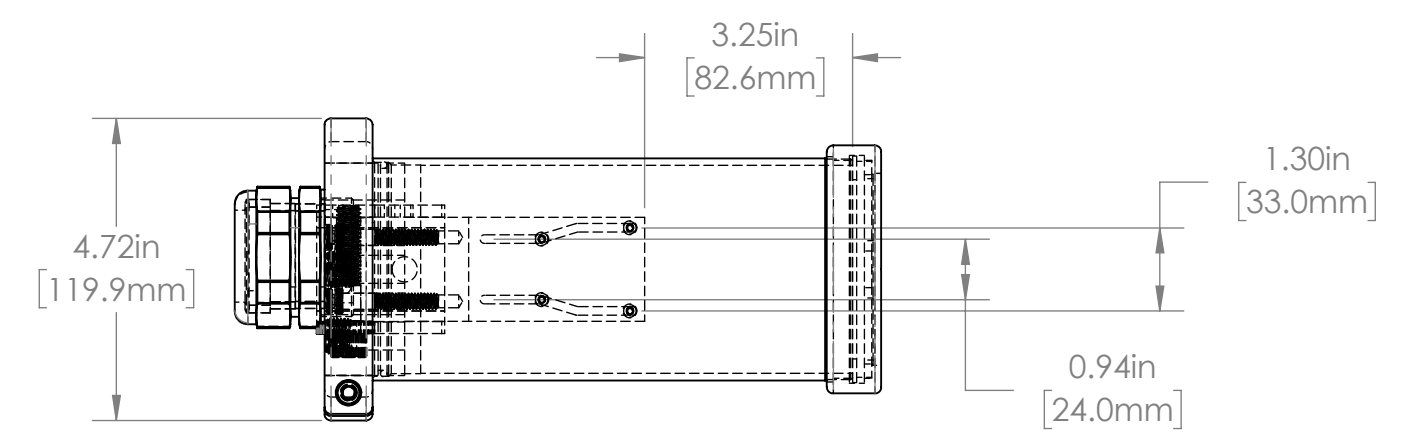


1 2 3 4 5 6

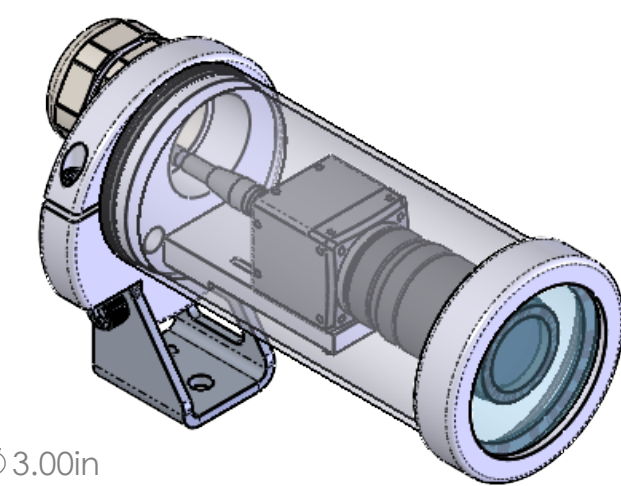
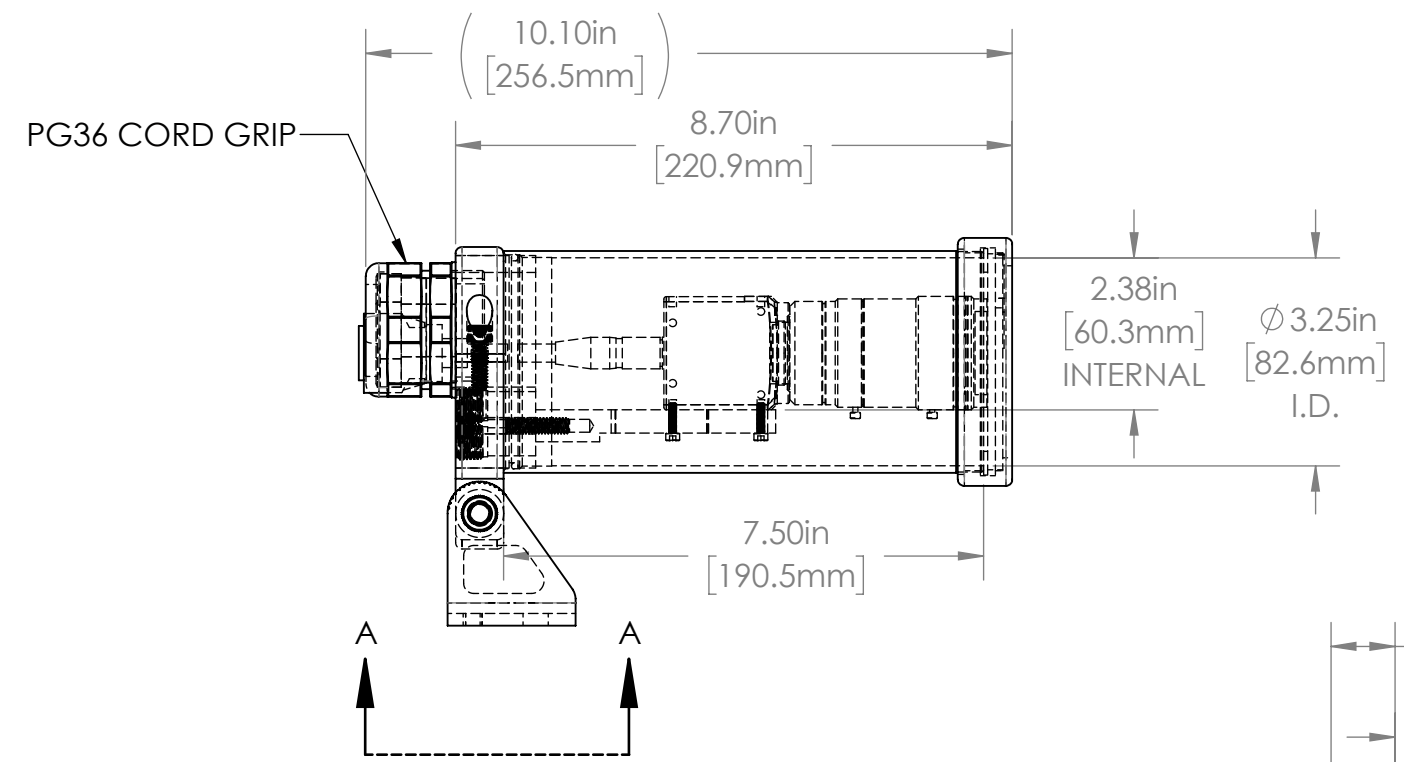
A



REVISIONS				
ZONE	REV.	DESCRIPTION	DATE	APPROVED
	A	RELEASED FOR PRODUCTION	3/2/2022	DMM

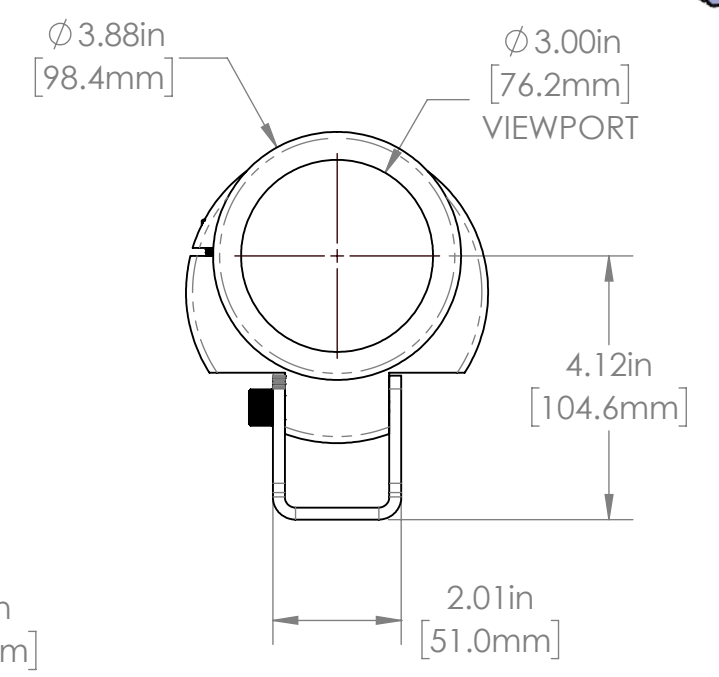
A

B



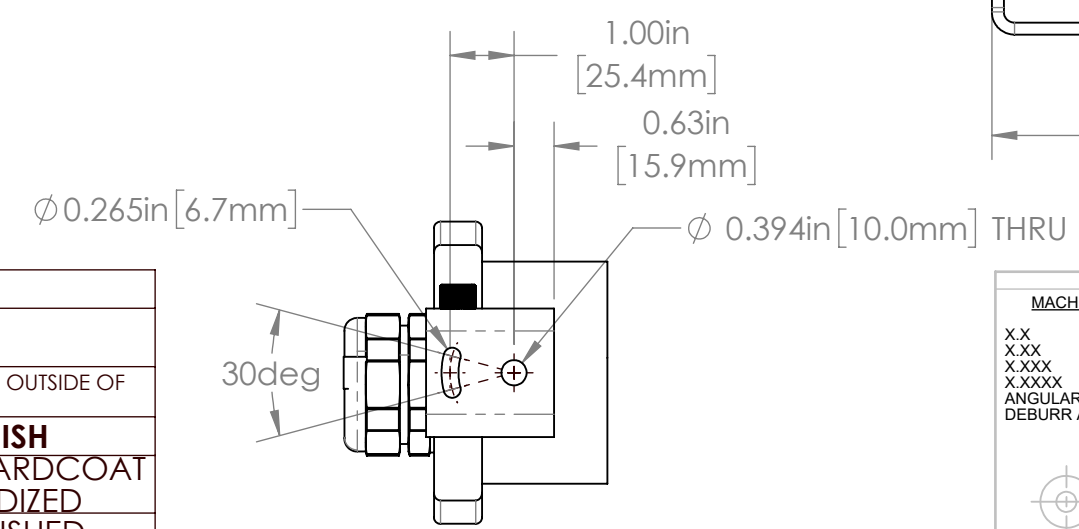
B

C



C

35C SERIES PROPERTIES TABLE		
ENVIRONMENT RATING	IP68*	
	(*RATING MAY CHANGE IF INSTALLER MILLS CABLE GLAND OUTSIDE OF TOLERANCE)	
COMPONENT	MATERIAL	FINISH
BODY/BASE/BARREL	6061 ALUMINUM	CLEAR HARDCOAT ANODIZED
FOOT	304 SS	BURNISHED
VIEWPORT	CLEAR FLOWCOAT ACRYLIC	ABR2
GASKET	VITON	NONE
ARM/ADAPTOR	6061 ALUMINUM	NONE
HARDWARE	18-8 SS	NONE



SECTION A-A

TOLERANCES UNLESS OTHERWISE SPECIFIED			
MACHINING		SHEET METAL	
X.X	0.0250"	HOLE TO HOLE (SAME SURFACE)	X.X 0.030"
X.XX	0.0100"		X.XX 0.010"
X.XXX	0.0050"		X.XXX 0.005"
X.XXXX	0.0005"		X.XXXX 0.005"
ANGULAR	0.5°	HOLE TO FOLDED EDGE	X.X 0.035"
DEBURR ALL			X.XX 0.025"
			X.XXX 0.015"
		FOLD TO FOLD	X.X 0.045"
			X.XX 0.035"
			X.XXX 0.020"
		ANGULAR	1.0°

APG Vision LLC
4055 Alpha Drive
Allison Park, PA 15101 USA
Phone +1 (412) 487-8211
apgvision.com

apgvision

DESCRIPTION:
35C 7.5IN BARREL, SEALED, 33mm & 24mm O.C. ARM

MATERIAL: SEE BOM

FINISH: SEE BOM

DRAWN BY: DMM	DATE: 3/2/2022	SCALE: 1:3	SHT-SIZE: B	APPROX. WEIGHT (LBS): 3.8726
CHECKED BY: DMM	DATE: 3/2/2022	PART NUMBER: 35C-MG		REVISION: A

Sheet 1 of 1

D

1 2 3 4 5 6