

1 2 3 4 5 6

A

B

C

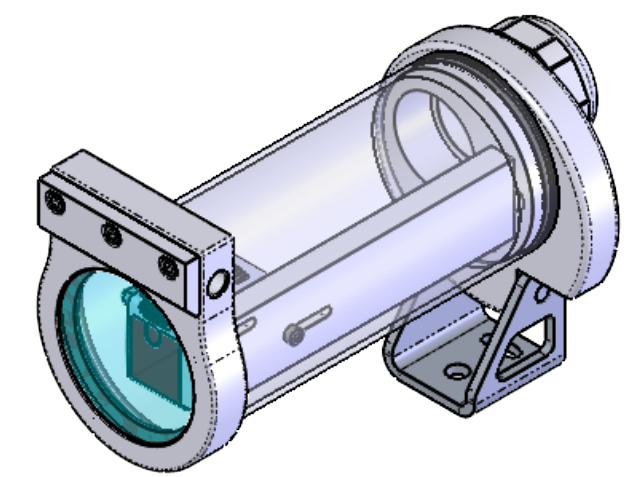
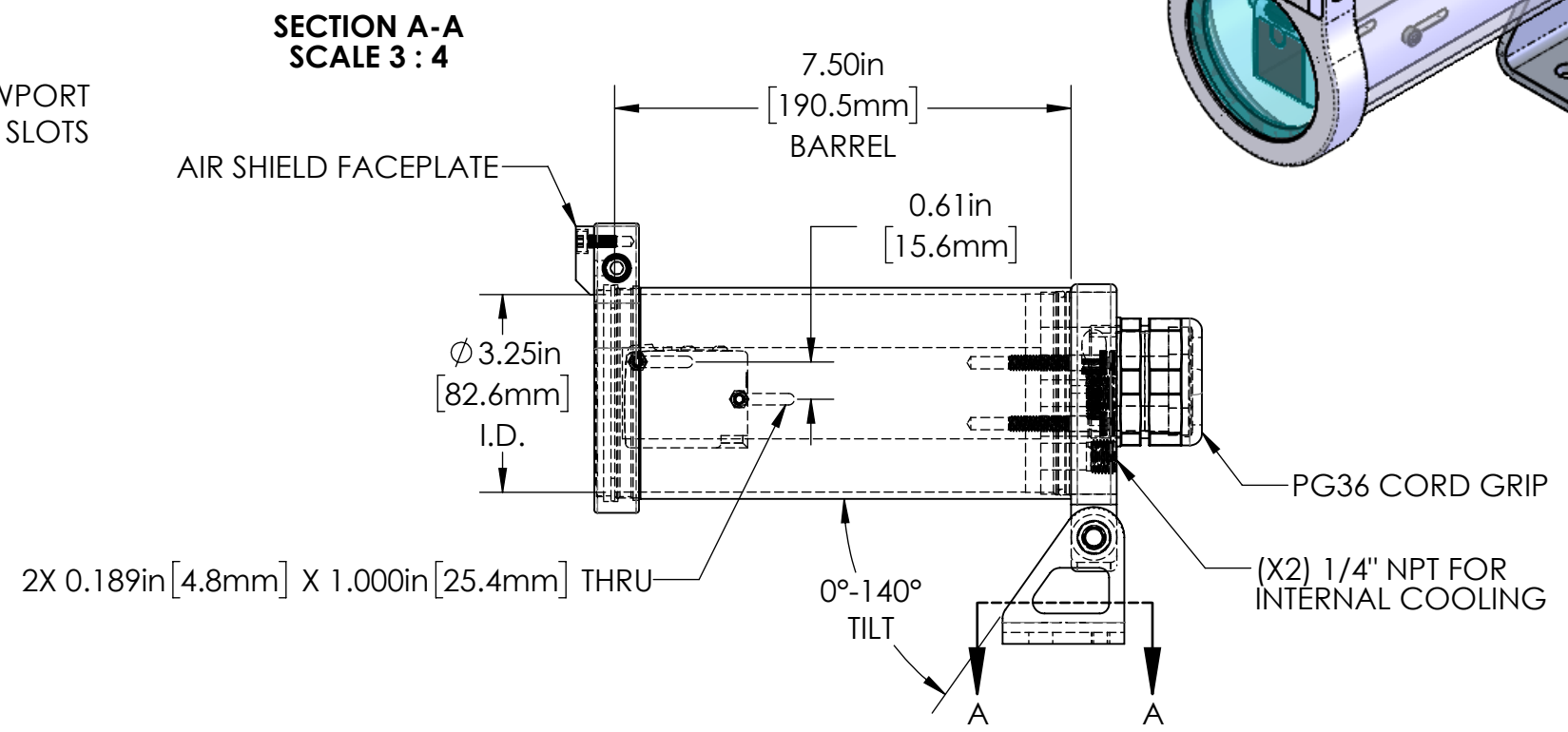
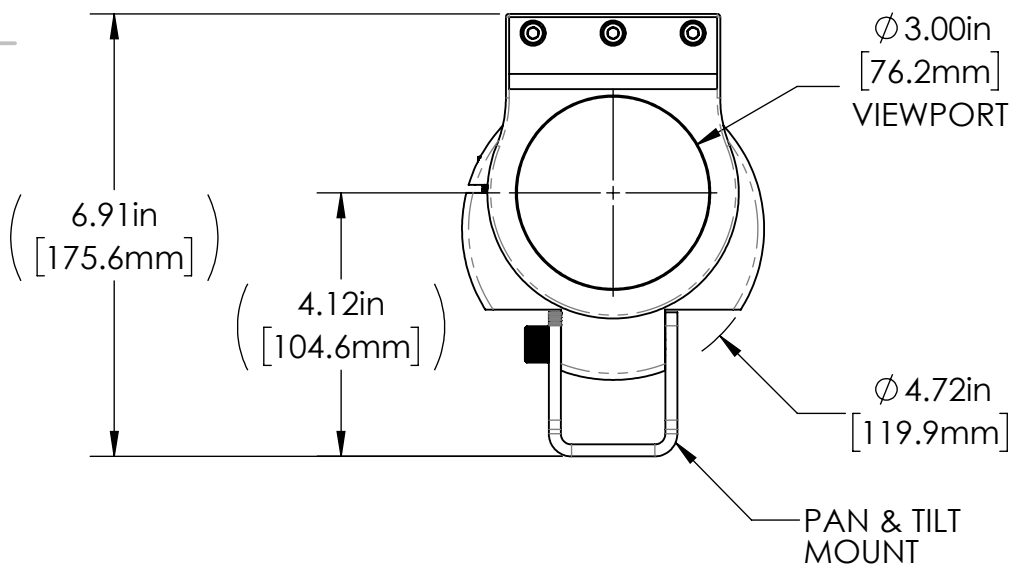
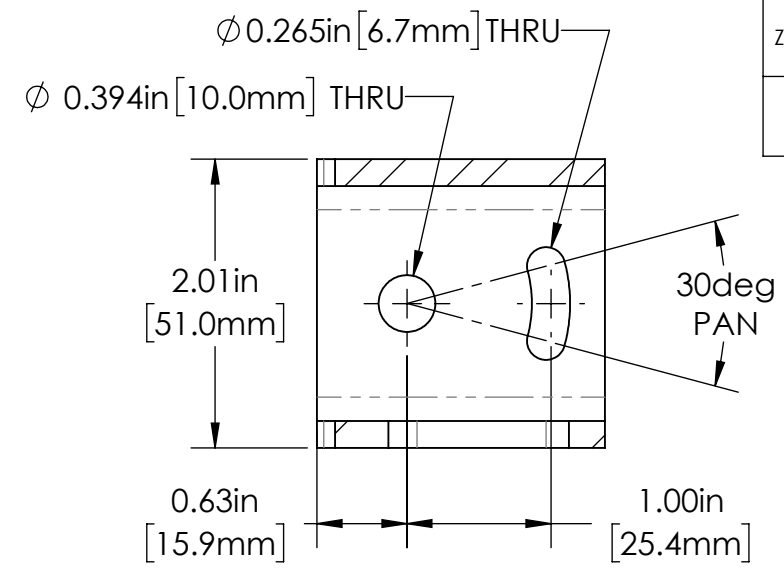
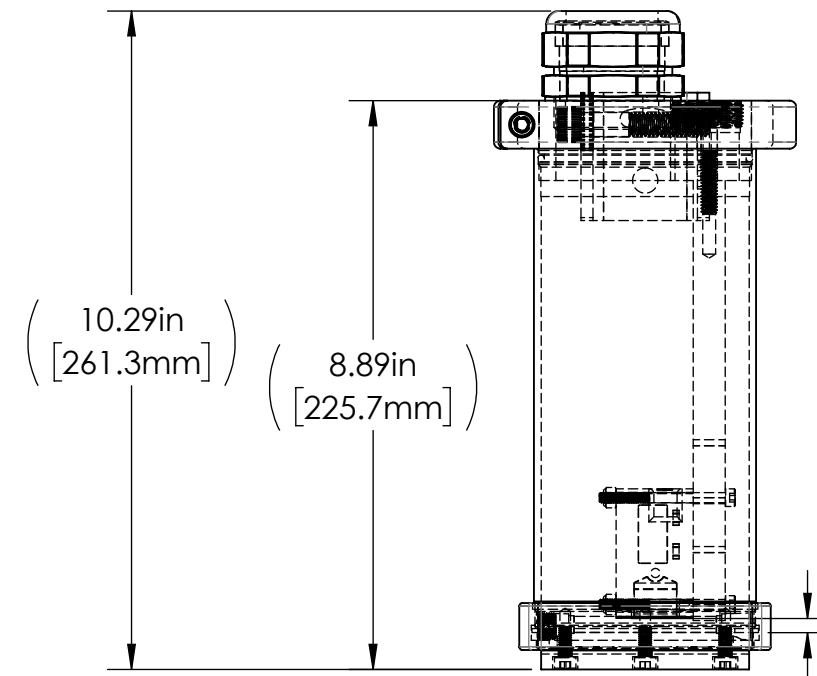
D

A

B

C

D



REVISIONS				
ZONE	REV.	DESCRIPTION	DATE	APPROVED
	A	RELEASED FOR PRODUCTION	7/14/2023	TWD

35C SERIES PROPERTIES TABLE

ENVIRONMENT RATING	IP68*	
	(*RATING MAY CHANGE IF INSTALLER MILLS CABLE GLAND OUTSIDE OF TOLERANCE)	
COMPONENT	MATERIAL	FINISH
BODY/BASE/BARREL/FACEPLATE	6061 ALUMINUM	CLEAR HARDCOAT ANODIZED
PAN & TILT FOOT	304 SS	BURNISHED
VIEWPORT	CLEAR FLOW COAT ACRYLIC	ABR2
GASKET	VITON	NONE
ARM/ADAPTER	6061 ALUMINUM	NONE
HARDWARE	18-8 SS	NONE

TOLERANCES UNLESS OTHERWISE SPECIFIED	
MACHINING	SHEET METAL
X.X 0.0250"	HOLE TO HOLE (SAME SURFACE) X.X 0.030"
X.XX 0.0100"	X.XX 0.010"
X.XXX 0.0050"	X.XXX 0.005"
X.XXXX 0.0005"	X.XXX 0.005"
ANGULAR 0.5°	HOLE TO FOLDED EDGE X.X 0.035"
DEBURR ALL	X.XX 0.025"
	X.XXX 0.015"
	FOLD TO FOLD X.X 0.045"
	X.XX 0.035"
	X.XXX 0.020"
	ANGULAR 1.0°

APG Vision LLC
4055 Alpha Drive
Allison Park, PA 15101 USA
Phone +1 (412) 487-8211
apgvision.com

DESCRIPTION:
35C SEALED 7.5IN BARREL, ACRYLIC VIEWPORT, & AIR SHIELD FACEPLATE FOR KEYENCE LR-TB5000C

MATERIAL: SEE BOM

FINISH: SEE BOM

DRAWN BY: GAS	DATE: 7/14/2023	SCALE: 1:3	SHT-SIZE: B	APPROX. WEIGHT (LBS) 4.1218
CHECKED BY: TWD	DATE: 7/14/2023	PART NUMBER: 35C-MS		REVISION A

Sheet 1 of 1

1 2 3 4 5 6