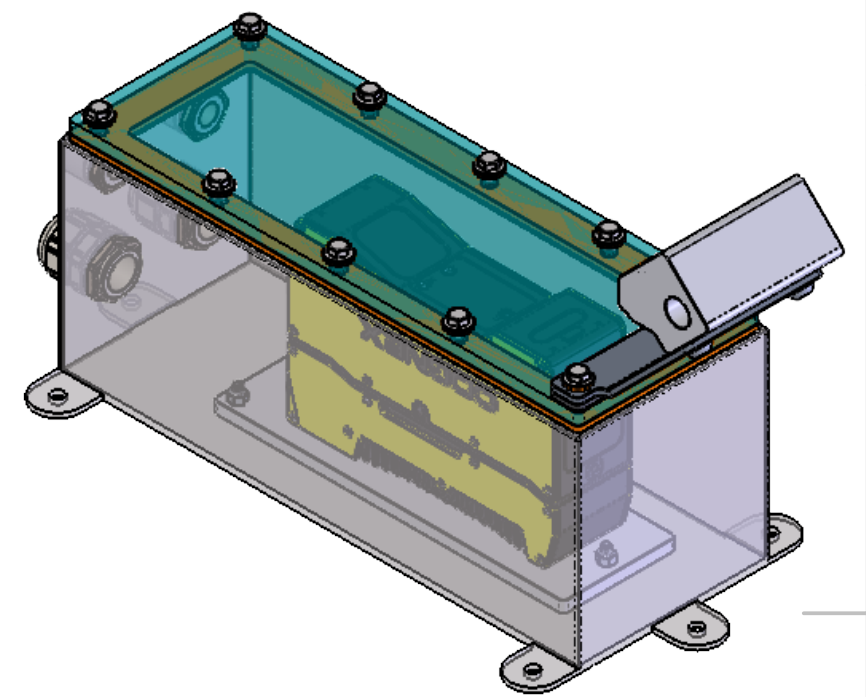
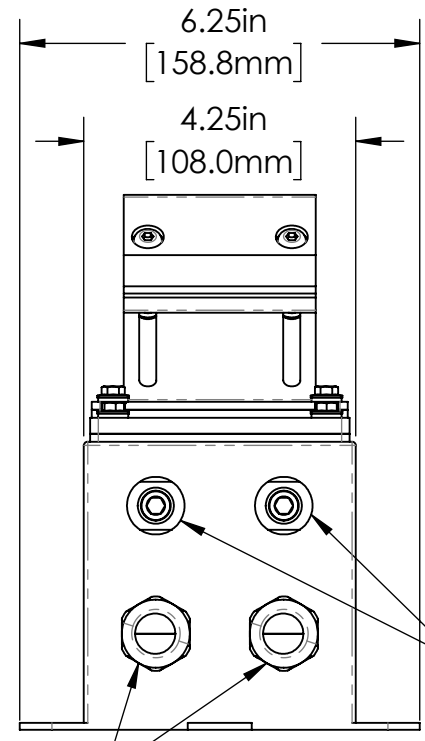
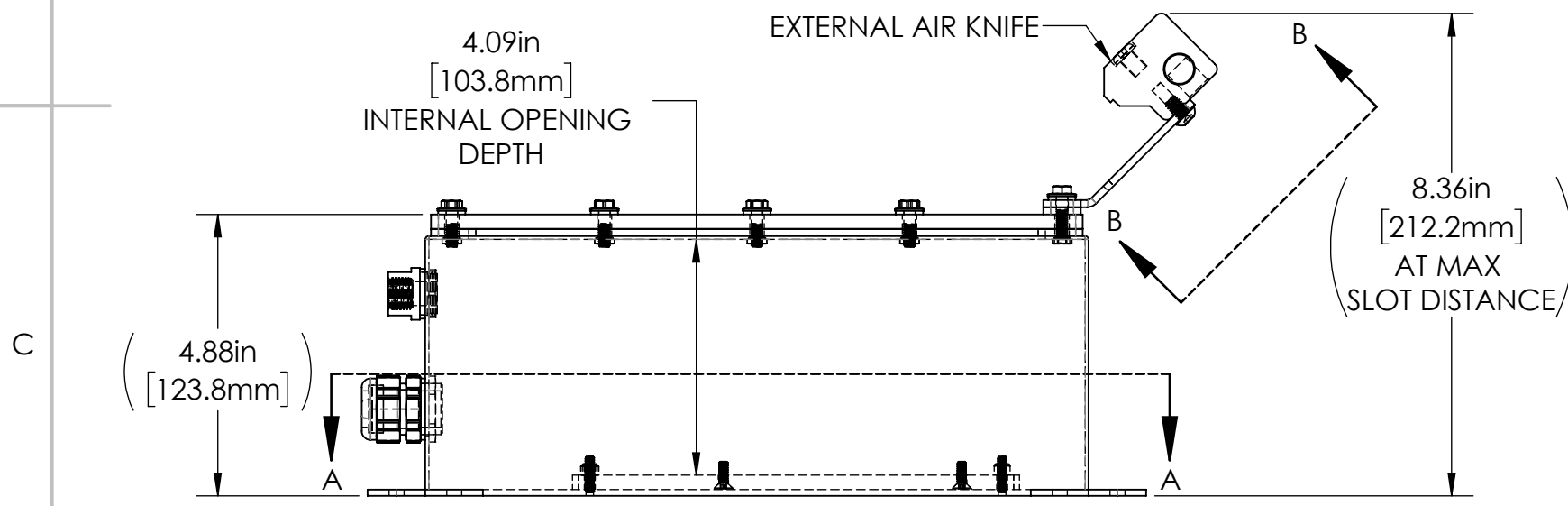


NOTE: CAMERA HIDDEN FOR CLARITY

| REVISIONS | | | | |
|-----------|------|-------------------------|----------|----------|
| ZONE | REV. | DESCRIPTION | DATE | APPROVED |
| | A | RELEASED FOR PRODUCTION | 2/1/2022 | DMM |



LL SERIES PROPERTIES TABLE

| ENVIRONMENT RATING | IP68* | |
|---------------------|--|-------------------------|
| | (*RATING MAY CHANGE IF INSTALLER MILLS CABLE GLAND OUTSIDE OF TOLERANCE) | |
| COMPONENT | MATERIAL | FINISH |
| BODY | 316 SS | BURNISHED |
| VIEWPORT | ACRYLIC | CLEAR ABR2 |
| GASKET | 40D SILICONE | NONE |
| ADAPTER | 6061 ALUMINUM | NONE |
| AIR KNIFE & BRACKET | 5052 ALUMINUM | CLEAR HARDCOAT ANODIZED |
| HARDWARE | 316 SS - EXTERNAL, 18-8 SS - INTERNAL | NONE |

TOLERANCES UNLESS OTHERWISE SPECIFIED

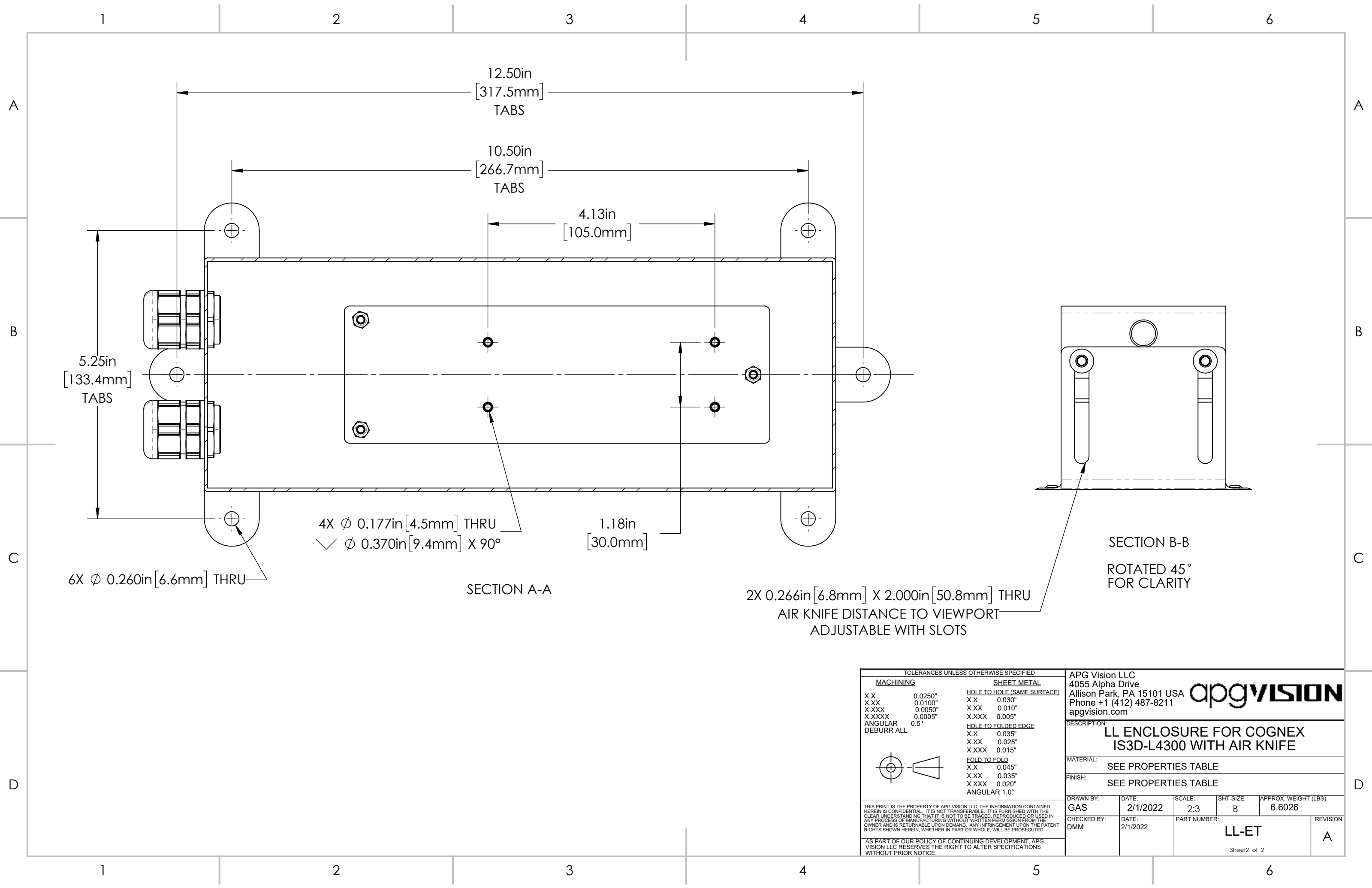
| MACHINING | SHEET METAL |
|----------------|--|
| X.X 0.0250" | HOLE TO HOLE (SAME SURFACE) X.X 0.030" |
| X.XX 0.0100" | X.XX 0.010" |
| X.XXX 0.0050" | X.XXX 0.015" |
| X.XXXX 0.0005" | X.XXX 0.005" |
| ANGULAR 0.5° | HOLE TO FOLDED EDGE X.X 0.035" |
| DEBURR ALL | X.XX 0.025" |
| | X.XXX 0.015" |
| | FOLD TO FOLD X.X 0.045" |
| | X.XX 0.035" |
| | X.XXX 0.020" |
| | ANGULAR 1.0° |

THIS PRINT IS THE PROPERTY OF APG VISION LLC. THE INFORMATION CONTAINED HEREIN IS CONFIDENTIAL. IT IS NOT TRANSFERABLE. IT IS FURNISHED WITH THE CLEAR UNDERSTANDING THAT IT IS NOT TO BE TRACED, REPRODUCED OR USED IN ANY PROCESS OF MANUFACTURING WITHOUT WRITTEN PERMISSION FROM THE OWNER AND IS RETURNABLE UPON DEMAND. ANY INFRINGEMENT UPON THE PATENT RIGHTS SHOWN HEREIN, WHETHER IN PART OR WHOLE, WILL BE PROSECUTED.

AS PART OF OUR POLICY OF CONTINUING DEVELOPMENT, APG VISION LLC RESERVES THE RIGHT TO ALTER SPECIFICATIONS WITHOUT PRIOR NOTICE.

| | | | | |
|--|----------------|--------------------|-------------|------------------------------|
| APG Vision LLC 4055 Alpha Drive Allison Park, PA 15101 USA Phone +1 (412) 487-8211 apgvision.com | | | | |
| DESCRIPTION: LL ENCLOSURE FOR COGNEX IS3D-L4300 WITH AIR KNIFE | | | | |
| MATERIAL: SEE PROPERTIES TABLE | | | | |
| FINISH: SEE PROPERTIES TABLE | | | | |
| DRAWN BY: GAS | DATE: 2/1/2022 | SCALE: 1:3 | SHT-SIZE: B | APPROX. WEIGHT (LBS): 6.6026 |
| CHECKED BY: DMM | DATE: 2/1/2022 | PART NUMBER: LL-ET | REVISION: A | |

Sheet 1 of 2



4X Ø 0.177in [4.5mm] THRU
 ✓ Ø 0.370in [9.4mm] X 90°

6X Ø 0.260in [6.6mm] THRU

SECTION A-A

2X 0.266in [6.8mm] X 2.000in [50.8mm] THRU
 AIR KNIFE DISTANCE TO VIEWPORT
 ADJUSTABLE WITH SLOTS

SECTION B-B
 ROTATED 45°
 FOR CLARITY

TOLERANCES UNLESS OTHERWISE SPECIFIED

| MACHINING | | SHEET METAL | |
|------------|---------|-----------------------------|--------------|
| X.X | 0.0250" | HOLE TO HOLE (SAME SURFACE) | |
| X.XX | 0.0100" | X.X | 0.030" |
| X.XXX | 0.0050" | X.XX | 0.010" |
| X.XXXX | 0.0005" | X.XXX | 0.005" |
| ANGULAR | 0.5° | HOLE TO FOLDED EDGE | |
| DEBURR ALL | | X.X | 0.035" |
| | | X.XX | 0.025" |
| | | X.XXX | 0.015" |
| | | FOLD TO FOLD | |
| | | X.X | 0.045" |
| | | X.XX | 0.035" |
| | | X.XXX | 0.020" |
| | | | ANGULAR 1.0° |

THIS PRINT IS THE PROPERTY OF APG VISION LLC. THE INFORMATION CONTAINED HEREIN IS CONFIDENTIAL. IT IS NOT TRANSFERABLE. IT IS FURNISHED WITH THE CLEAR UNDERSTANDING THAT IT IS NOT TO BE TRACED, REPRODUCED OR USED IN ANY PROCESS OF MANUFACTURING WITHOUT WRITTEN PERMISSION FROM THE OWNER AND IS RETURNABLE UPON DEMAND. ANY INFRINGEMENT UPON THE PATENT RIGHTS SHOWN HEREIN, WHETHER IN PART OR WHOLE, WILL BE PROSECUTED.

AS PART OF OUR POLICY OF CONTINUING DEVELOPMENT, APG VISION LLC RESERVES THE RIGHT TO ALTER SPECIFICATIONS WITHOUT PRIOR NOTICE.

| | | | | |
|--|--------------------------|------------------------------|-----------------------|---------------------------------------|
| APG Vision LLC 4055 Alpha Drive Allison Park, PA 15101 USA Phone +1 (412) 487-8211 apgvision.com | | | | |
| DESCRIPTION: LL ENCLOSURE FOR COGNEX IS3D-L4300 WITH AIR KNIFE | | | | |
| MATERIAL: SEE PROPERTIES TABLE | | | | |
| FINISH: SEE PROPERTIES TABLE | | | | |
| DRAWN BY: GAS | DATE: 2/1/2022 | SCALE: 2:3 | SHT-SIZE: B | APPROX. WEIGHT (LBS) 6.6026 |
| CHECKED BY: DMM | DATE: 2/1/2022 | PART NUMBER: LL-ET | | REVISION A |

Sheet2 of 2