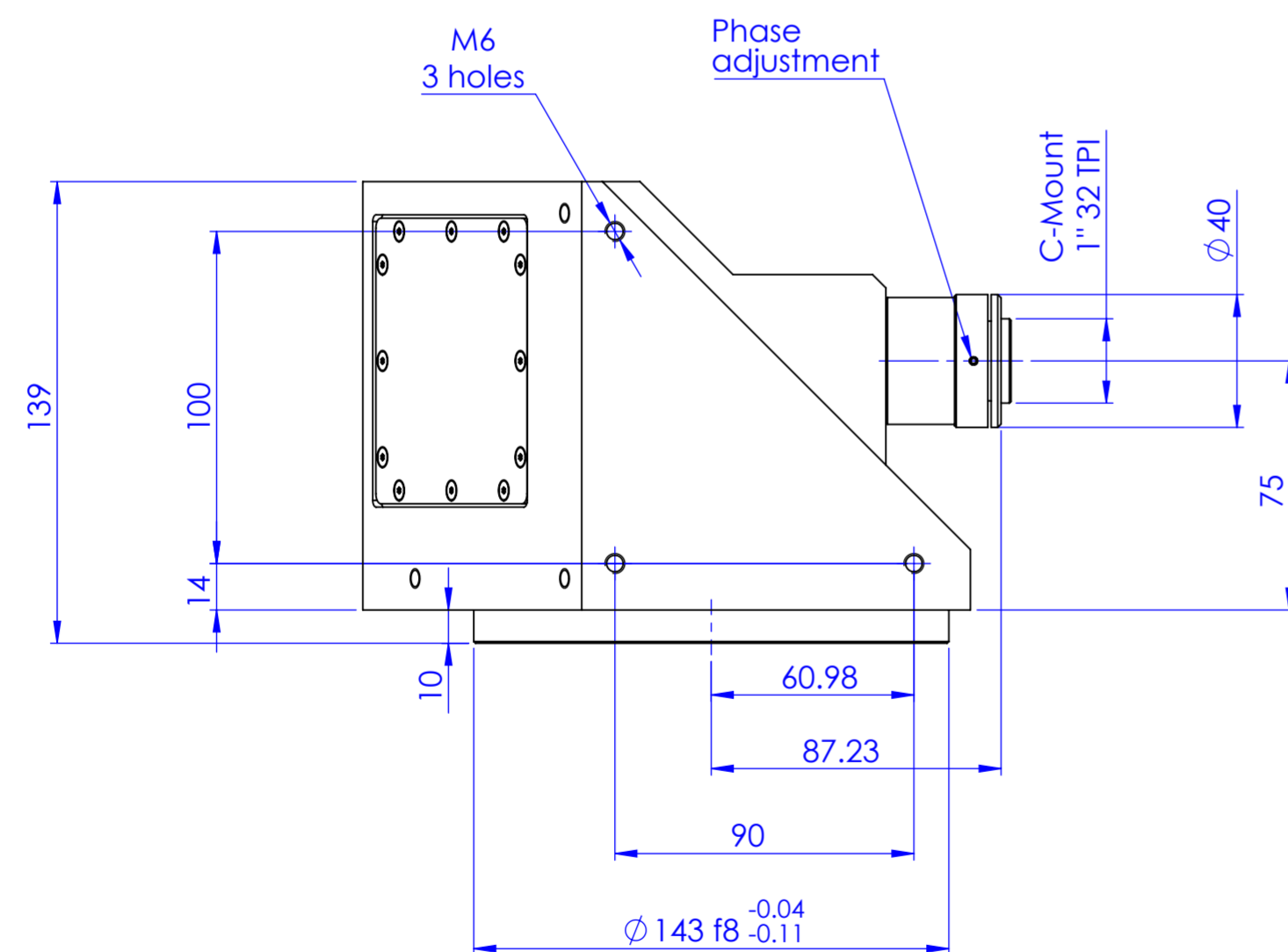
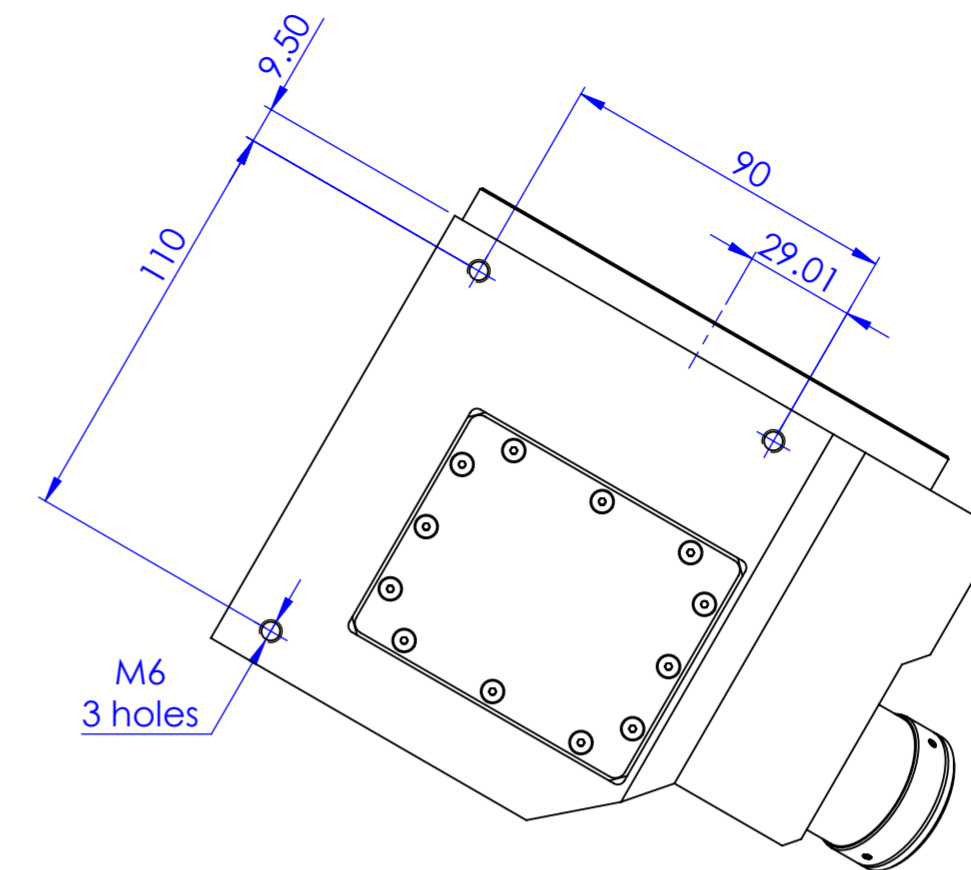
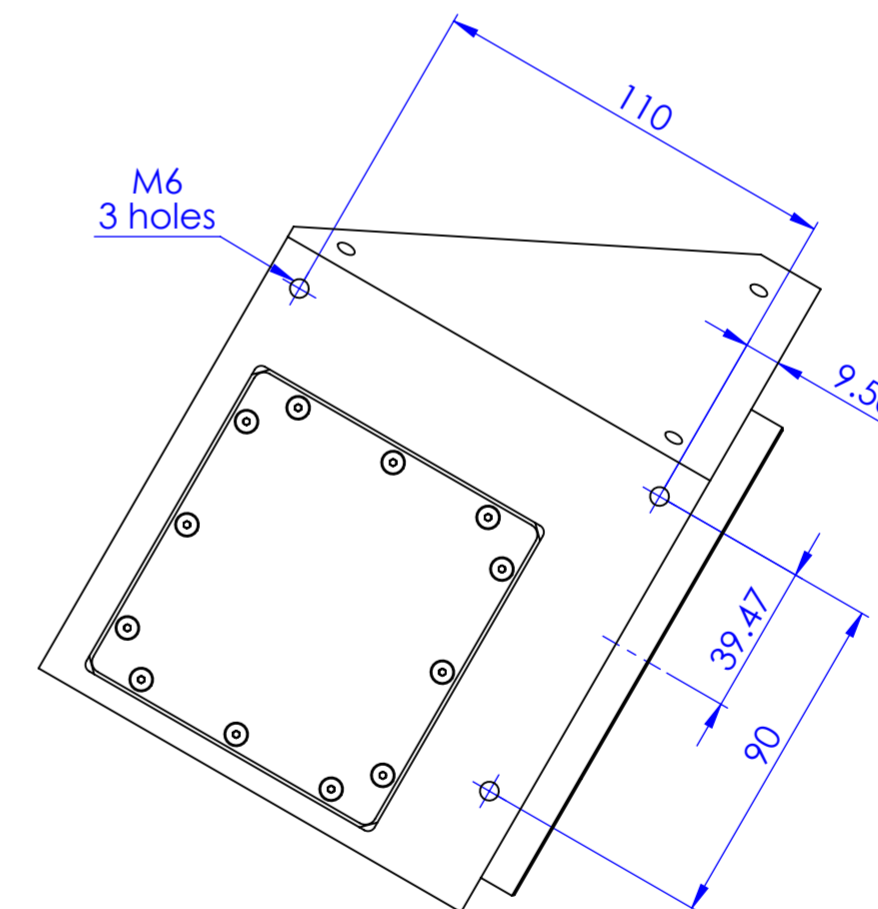


VIEW C



VIEW A



Material	N.A.	Mass	4258 g	Scale	1:2																									
Surface treatment	N.A.	Part No.	CO23941																											
Geometrical tolerance (ISO 2768-2)	Class	K	Undimensioned bevels	0.5x45°	Description <b>TCCR23096</b>																									
Linear tolerance (ISO 2768-2)	Class	m	Undimensioned radii	R 0.5																										
<table border="1"> <tr> <td>0.5</td><td>&gt;3+</td><td>&gt;6+</td><td>&gt;30+</td><td>&gt;120</td><td>&gt;400+</td><td>&gt;1000</td><td>&gt;2000</td> </tr> <tr> <td>+3</td><td>6</td><td>30</td><td>120</td><td>+400</td><td>1000</td><td>+2000</td><td>+4000</td> </tr> <tr> <td>±0.1</td><td>±0.1</td><td>±0.2</td><td>±0.3</td><td>±0.5</td><td>±0.8</td><td>±1.2</td><td>±2</td> </tr> </table>	0.5	>3+	>6+	>30+	>120	>400+	>1000	>2000	+3	6	30	120	+400	1000	+2000	+4000	±0.1	±0.1	±0.2	±0.3	±0.5	±0.8	±1.2	±2			Date	Name	Drawing No.	Sheet
	0.5	>3+	>6+	>30+	>120	>400+	>1000	>2000																						
	+3	6	30	120	+400	1000	+2000	+4000																						
±0.1	±0.1	±0.2	±0.3	±0.5	±0.8	±1.2	±2																							
		Designed	05/03/2015	Vasconetto	DP 23941-C	1/1																								
		Drawn	16/07/2015	Rodella																										
		Checked			<i>Secret and confidential - All rights reserved - No copy, dissemination or circulation is allowed unless specifically authorized in writing by OPTO ENGINEERING S.r.l. - Any violation shall be legally prosecuted.</i>																									
OPTO ENGINEERING S.r.l. - Mantova, Italy - Tel. +39 0376699111 - www.opto-e.com																														